

# State of Wyoming Corner Record

(In compliance with the **CORNER PERPETUATION AND FILING ACT**, Wyoming Statutes, 1997 Section 33-29-140 et. seq., and the Rules and Regulations of the Board of Professional Engineers and Professional Land Surveyors)

Reverse side of this form may be used if more space is needed.

Record of original survey and citation of source of historical information (if corner is lost or obliterated). Description of corner monumentation evidence found and/or monument and accessories established to perpetuate the location of this corner. Sketch of relative location of monument, accessories, and reference points with course and distance to adjacent corner(s) (if determined in this survey). Method and rationale for reestablishment of lost or obliterated corner.

**S $\frac{1}{4}$  CORNER, SECTION 15, T.16N., R.67W., 6TH P.M., LARAMIE COUNTY, WYOMING**

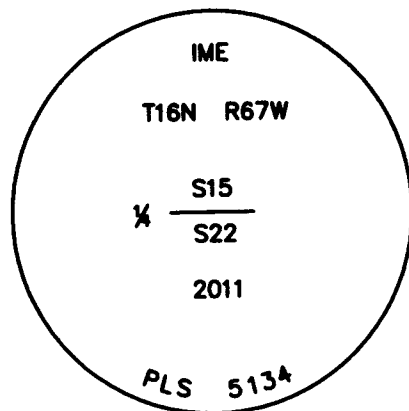
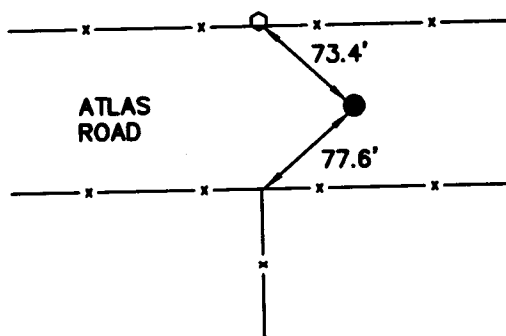
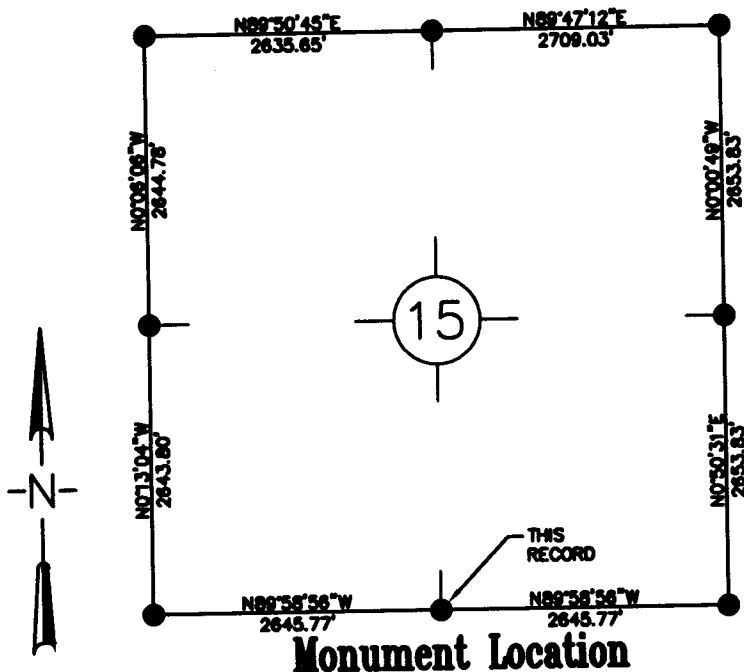
FOUND: NOTHING

SET: 2 $\frac{1}{2}$ " ALUMINUM CAP BY PROPORTIONATE METHODS 0.2' BELOW SURFACE OF ROAD, 77.6' NE OF INTERSECTION OF N-S AND E-W FENCE AND 73.4' SE OF CONCRETE POST.

Note: Bearings and distances are relative to NAD 1983 Wyoming State Plane East Zone. Distances shown are ground.

### LEGEND

- ⊙ FOUND BRASS CAP
- FOUND ALUMINUM CAP
- ◇ FOUND STONE
- SET 2 $\frac{1}{2}$ " ALUMINUM CAP ON  $\frac{3}{8}$ " X 24" REBAR STAMPED IME PLS 5134.



Date of Field Work: 2/3/2011 Office Reference: Book: 1104 Page: 63 15265-RS (Pt. #4261)

### Cross Index Plat

	1	2	3	4	5	6	7	8	9	10	11	12	13	14	15	16	17	18	19	20	21	22	23	24	25
A																									
B																									
C		6	5	4	3	2	1																		
D																									
E																									
F																									
G																									
H																									
I																									
J																									
K																									
L		18	17	16	15	14	13																		
M																									
N																									
O																									
P		19	20	21	22	23	24																		
Q																									
R																									
S																									
T		30	29	28	27	26	25																		
U																									
V																									
W																									
X		31	32	33	34	35	36																		
Y																									
Z																									
	1	2	3	4	5	6	7	8	9	10	11	12	13	14	15	16	17	18	19	20	21	22	23	24	25

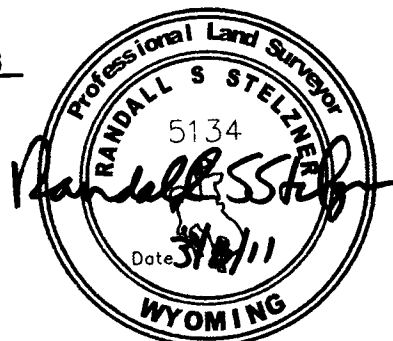
Firm/Agency, Address

Inberg-Miller Engineers  
124 East Main Street  
Riverton, WY 82501

Telephone Number: 307-856-8136

This corner record was prepared by me or under my direction and supervision.

SEAL & SIGNATURE



RECORDED 3/10/2011 AT 12:27 PM REC# 564567 JK# 2211 PG# 475  
 DEBRA K. LATHROP, CLERK OF LARAMIE COUNTY, WY PAGE 1 OF 1

Corner Name S $\frac{1}{4}$  Corner Section 15, T 16 N, R 67 W, 6th P.M. Cross-Index No.: N-15  
 County: Laramie, Wyoming